

**Print & Apply Systems**

- ✓ Configurable to apply 1, 2 or 3 labels per pallet
- ✓ PLC interface for an efficient control of label applying sequence
- ✓ 5,7" HMI Display
- ✓ Smart Tamp Pad :
  - ✓ Label sensor
  - ✓ Label application sensor
  - ✓ Adaptable to any surface
- ✓ Speed up to 200 pallets/hour for 2 side labelling
- ✓ High performance and reliability
- ✓ High-speed data processor for standalone mode and great data storage capacity
- ✓ Covered label roll cabinet. Cooling System as option
- ✓ Easy access for consumables changeover
- ✓ Telescopic support

# APL 8000 Series

## Print & Apply Systems

*"Pallet Print & Apply System  
for 1, 2 or 3 sides in real time"*

**APL 8000 Series** meets GS1 global standards on codification and traceability. Ideal solution for pallet identification according to GS1 normative using GS1-128 symbology (including AI).

**APL 8000 Series** is dedicated to automatic labeling of the pallet on 1,2 or 3 sides even in hostile industrial environments with high production volume.

**APL 8000 Series** is compatible with any OEM print engine in the market.

Controlled by a PLC, APL 8000 Series can be adapted to any end-of-line using synchronization and guided alarm signals.

**APL 8000 Series** of easy installation and integration into any production line. Wide connectivity range allows connect it to any automatic device on the line, manage and transmit data to or from any ERP, MES, WMS or DBMS using UBS Designer message editor and UBS Labman Software.

**APL 8000 Series** meets the GS1 global standards for codification and traceability with ANSI barcode printing and grade A and B in GTIN codes.



# APL 8000 Series

**Print & Apply Systems**

**Ideal to apply labels on  
1, 2 or 3 sides of the pallet**

## Technical Features

PRINT ENGINE	ZEBRA, SATO, HONEYWELL & others (4" / 6" RH or LF)
PRINTING RESOLUTION	From 203 up to 300 dpi
LABEL ROLL	Max. diameter.: up to 300 mm / 11.8"
RIBBON ROLL	Max. Length: 600 m / 1.968 ft (depending on print engine specifications)
INTERFACE	RS232, USB, Ethernet, Wireless (optional)
DISPLAY	Touchscreen 5,7"
POWER SUPPLY	110 / 240 VAC, 50 / 60 Hz
WORKING TEMPERATURE	From + 4°C / 39.2 F up to 45°C / 113 F From + 4° / 39.2 F up to 70 °C / 158 F (Optional Cooling System)
HUMIDITY	Between 20-85% non-condensing

## Models

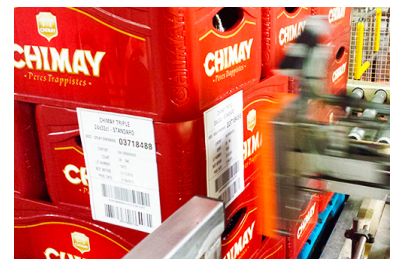
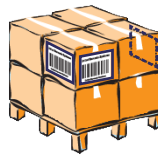
**APL8100**  
1 Label  
10 pallets/ min



**APL8200**  
2 Labels  
3 pallets/ min



**APL8300**  
3 Labels  
2 pallets/ min



USAAPL80/180901



**United Barcode Systems**

Labeling, Coding & Marking

[www.ubscore.com](http://www.ubscore.com)

*The right choice*

